

Poetic • Vision

Federico Federici

<http://federicofederici.net>
leeremittmag@gmail.com

SAND

<https://sandjournal.com/>

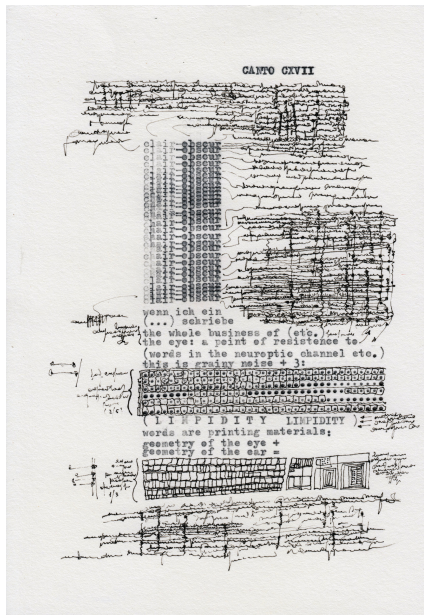
April 25, 2021
Berlin



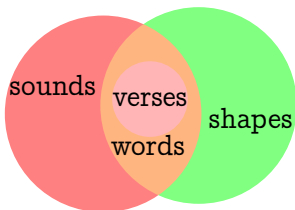
a portrait of me as a film

- likely dialogue in Tarkovskij's *Zone*...
- physicist: *"things need not have happened to be true"*
- writer: *"lines need not be readable to be meaningful"*

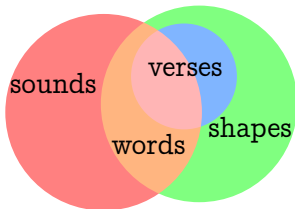
└ model → text: transcripts from demagnetized tapes, 2021

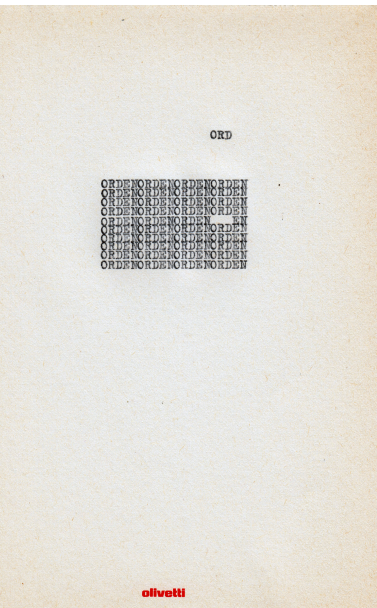


- word-based scheme (not to scale)

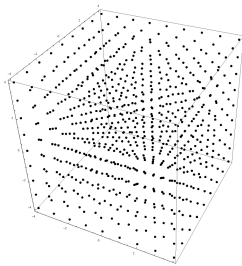


- asemic/word-based scheme (not to scale)





- model: crystallography
- cubic crystal lattice in Linux Octave



```
table[point[x,y,z],x,-4,4,y,-4,4,z,-4,4], axis:true];
```

- Swedish: *orden|order ord|word en|one*
- w|ord-atom → vacancy in text-crystal

- phenomenon: wind in the Apennines
- set up: shotgun mic pointed to a birch ✓ ambisonic mic, camera on tree stumps ✓ contact mics to detect wood vibrations ✓ tools for drawing, taking notes ✓ typewriter
- collected data: bird songs, sounds, noisy samples, asemic strips, writings, drawings, leaves, sticks, bark fragments

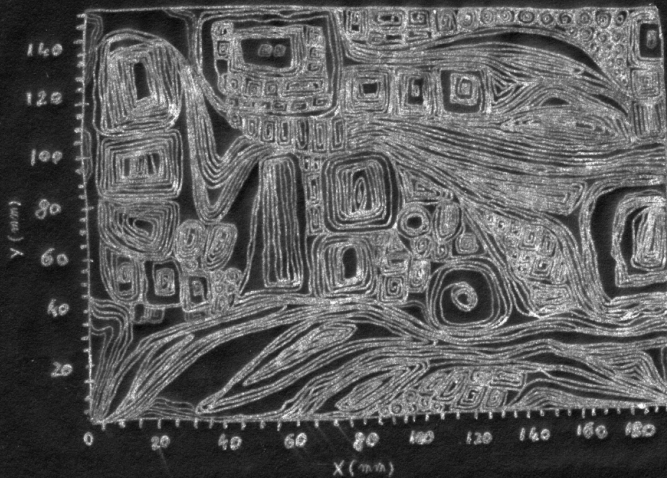


- text: poems, mostly 7-syllable/11-syllable based
- →

 →
- loose sheets hand sewn → artist's book
- scanned sheets + poems → print catalogue







Bees and honey are a worn out poetry myth, but one can accept the challenge and try to revive it. In the mid-1940s, Karl von Frisch discovered a connection between the dance in the hive of bees returning from a successful exploration outside and the presence of nearby/distant food sources.



Figure 1.
Round dance

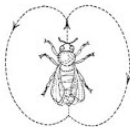


Figure 2.
Waggle dance

The presence of an abundant source within a range of 100 *m* away is conveyed to hive mates by means of a round dance (fig. 1). If the food is further away, the successful bee starts dancing in the shape of a figure of eight (fig. 2). It starts with a straight line, followed by a semicircle, then another straight line and a semicircle again in the opposite direction. The angle formed by the straight line in relation to gravity (dances are performed on a surface perpendicular to the ground) corresponds to the angle to the sun the bee flew from the feeding place back to the hive. The speed of wagging the hindquarter indicates the distance to the source ($1 \text{ s} \approx 1 \text{ km}$).

The language of bees combines space and time, shapes and rhythm like a text.

- read up more on the topic and familiarize yourself with it
- state in a preliminary prose the connection between the text and the dance of bees: you may eventually adapt it later
- this must both guide you and serve as a primary source for the reader to get acquainted with the elements of the phenomenon
- on an evening at your choice, try to convey in the form of a few short texts the most important "sources" of your day
- play rigorously around with rhythm and figures according to what you stated: you are a bee now and precisely know your task
- wagging: length of lines, rhymes, rhythm and so forth
- even a one-word poem laid out on a circular shape should vibrate in a strong way now